



HNE
Eberswalde

Hochschule für nachhaltige Entwicklung (FH)



E-learning and possibilities of its use in Polish State Forests

Paulina Monika Klysik,
4th Semester FIT, April 2013



e-learning

- distance learning
- Internet
- various methods





HNE
Eberswalde

Hochschule für nachhaltige Entwicklung (FH)



Where?

- schools
- universities
- companies
- self-education

How?

- text materials
- videos
- interactive multimedia
- communication channels



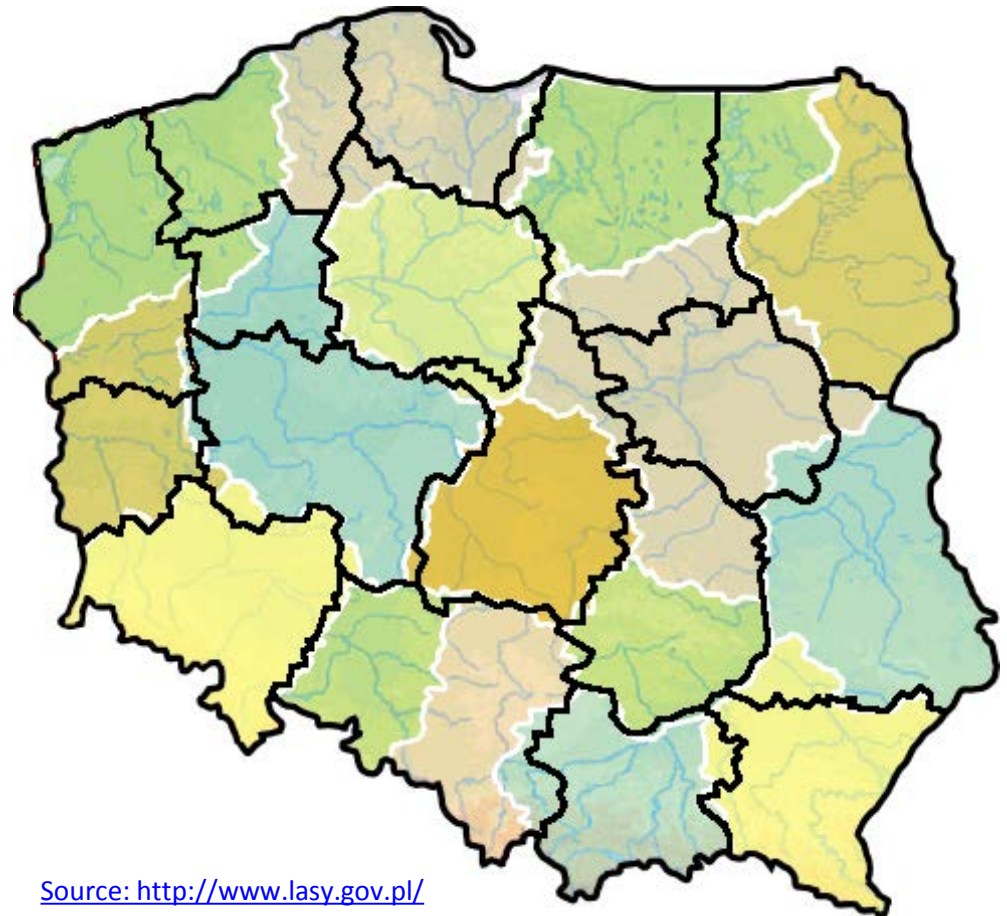
HNE
Eberswalde

Hochschule für nachhaltige Entwicklung (FH)



State Forests National Forest Holding

- 17 Regional Directorates
- 430 Forest Districts
- 24 798 workers
- Specific software needs



Source: <http://www.lasy.gov.pl/>

Software: Zasoby_WWW

- use: Tree breeding and seeds market
- databases
- intuitive
- requires forestry knowledge
- users (workers of): Forests Districts, seed testing stations, Forest Gene Bank in Kostrzyca, Forest Research Institute and Forest Reproductive Material Office

Software implementation -> need for training

Training factors

- budget
- difficulty
- users attitude
- materials usability and availability
- amount of time

Training ways

- on-site/away training
- e-learning
- blended learning

Screen recording/ video editing software

- Camtasia Studio

Multitasking application, screen recorder, gives opportunity to customize and edit videos. Record on-screen activity, add imported media, create interactive content, and share high-quality videos.



HNE
Eberswalde

Hochschule für nachhaltige Entwicklung (FH)



Videos preparation

- videos quality
- explaining the point
- silent mode
- video length
- time spent





Zamówienia									
	Miejsce przechowywania	Status	Dotyczy	Nr zamówienia	Data przyjęcia zamówienia	Zamawiający	Data odbioru	Nr materiału	Materiał zamawiany
F									
<input checked="" type="radio"/>	1385: LBG KOSTRZYCA	w trakcie	ZAPAS	19	2013-02-05	ŚWIERADÓW		1077/ZP/13	
<input type="radio"/>	1385: LBG KOSTRZYCA	zrealizowane	ZAPAS	18	2013-02-04	ŚWIERADÓW	2013-04-15	1076/ZP/13	
<input type="radio"/>	1385: LBG KOSTRZYCA	zrealizowane	ZAPAS	310	2013-02-01	ŚWIERADÓW		1075/ZP/13	
<input type="radio"/>	1385: LBG KOSTRZYCA	zrealizowane	ZAPAS	308	2013-02-01	ŚWIERADÓW		1062/ZP/13	
<input type="radio"/>	1385: LBG KOSTRZYCA	w trakcie	ZASÓB	304	2013-02-01	ŚWIERADÓW		1062/ZP/13	
<input type="radio"/>	1385: LBG KOSTRZYCA	w trakcie	ZAPAS	303	2013-02-01	ŚWIERADÓW	2013-02-14	1063/ZP/13	
<input type="radio"/>	1385: LBG KOSTRZYCA	zrealizowane	ZAPAS	302	2013-02-01	ŚNIEŻKA		1071/ZP/13	
<input type="radio"/>	1385: LBG KOSTRZYCA	w trakcie	ZAPAS	17	2013-02-01	ŚWIERADÓW		1071/ZP/13	

« 1 2 3 4 5 » »

[Edytuj](#) [Usuń](#)



Useful features

**Dane po przekazaniu
znajdują się w zakładce:
Nasiona do spakowania
(menu:Chłodnia)**

**Wybór
odpowiedniego
obiektu**

The screenshot displays a web application interface for seed management. The main area shows a table with columns for 'Nasiona' (Seeds) and 'Owoce' (Fruits), with values like 5,000 and 10,000. A modal window titled 'Struktura zasobu/depozytu' (Resource/Deposit Structure) is open, showing fields for 'Nr zasobu' (1072/ZP/13), 'Pozostała masa przekazana do pakowania' (1,5000 kg), 'Nr paszportu roślin' (empty), and 'Data utworzenia*' (2013-02-01). A red arrow points from the modal window to the 'Przejdź do wybranego obiektu' button in the navigation bar at the bottom.

Typ obiektu	Gatunek
GOSP	ŚW
Ni GOSP	ŚW
GOSP	ŚW

Struktura zasobu/depozytu

Nr zasobu: 1072/ZP/13

Pozostała masa przekazana do pakowania: 1,5000 kg

Nr paszportu roślin: []

Data utworzenia*: 2013-02-01

Zapisz

Przejdź do wybranego obiektu



HNE
Eberswalde

Hochschule für nachhaltige Entwicklung (FH)



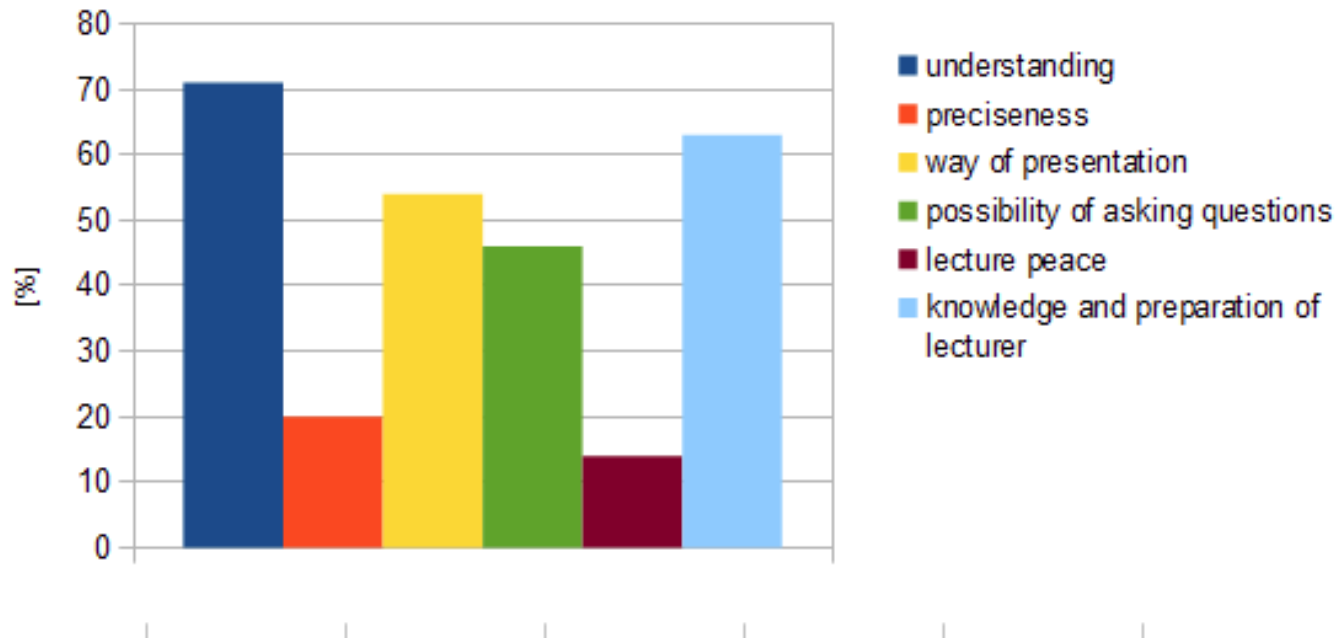
Survey among users

Objectives:

- Define training satisfaction level
- Discover users preferences
- Deliver better quality training materials
- Improvement in time management
- Possibility to fulfill needs

Importance of training quality factors according to users

Distribution of answers on question:
Which parts of training decide about its quality





HNE
Eberswalde

Hochschule für nachhaltige Entwicklung (FH)



Results

- 57% of responses indicated that currently available instructional materials are understandable but they could be shown in a better way.
- 96% of respondents stated that they would use instructive videos available on-line if provided.
- In comparison with text instructions, multimedia and video ones are more desirable by 77% of respondents.
- 91% of respondents considered the way/type of knowledge presentation as important.



HNE
Eberswalde

Hochschule für nachhaltige Entwicklung (FH)



Advantages of e-learning

- availability of materials at any time, possibility of knowledge “refreshing”
- changeable pace of lecture
- individualization of learning mode
- cost-effective
- multiple users



HNE
Eberswalde

Hochschule für nachhaltige Entwicklung (FH)



Disadvantages of e-learning

- difficult to communicate with teacher and fellows (?)
- hardware/software requirements
- lack of motivation (?)
- not for every kind of knowledge

Inspirations

- Coursera
- Canvas Network
- Udacity
- ...



Intro to Sustainability
Ecotech Institute
May 6, 2013 to Jul 14, 2013
Cost per student: Free



Enroll

Sources:
<https://www.udacity.com/>
<https://www.coursera.org/>
<https://canvas.net>







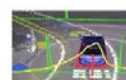


Stanford ONLINE
Human-Computer Interaction

- Home
- Video Lectures
- Assignments
- Quizzes
- Discussion Forums
- About the Course
- Syllabus and Calendar
- Tracks, Grading, & Statements of

Video Lectures

Having trouble viewing lectures? Try changing your player

- Week 1 -- Introduction
- ✓ Week 2 -- Needfinding
 - 2.1: Participant Observation (12:55)
 - 2.2: Interviewing (11:37)
 - 2.3: Additional Needfinding Strategies (11:54)
 - 2.4: Creating Design Goals (16:11)
- ✓ Week 3 -- Rapid Prototyping

	HTML5 Game Development <small>NEW</small> Building High Performance Web Applications	COMPUTER SCIENCE	This course will wa components of buil talk about how to s
	Software Testing How to Make Software Fail	COMPUTER SCIENCE	When writing softw valuable as creatio break software as y
	Software Debugging Automating the Boring Tasks	COMPUTER SCIENCE	In this class you wi systematically, hov process and build
	Programming Languages Building a Web Browser	COMPUTER SCIENCE	This class will give fundamentals of pr concepts include P
	Introduction to Artificial Intelligence AI-Class	COMPUTER SCIENCE	The objective of thi You will learn abou of the trade. We als
	Interactive 3D Graphics <small>NEW</small> Creating Virtual Worlds	COMPUTER SCIENCE	This class will teac 3D computer grap materials, lighting,
	Intro to Theoretical Computer Science Solving Hard Problems	COMPUTER SCIENCE	This class teaches theoretical compu



HNE
Eberswalde

Hochschule für nachhaltige Entwicklung (FH)



References

- Lefek, M. G. (2011). E-learning Project “Website design course for Forest District webmasters in State Forests National Forest Holding”. Warsaw University of Life Sciences / University of Applied Sciences Eberswalde.
- Pro-Holding Sp. z o.o. (2013). System Informatyczny Lasów Państwowych, Zasoby Nadleśnictwo, Dokumentacja użytkownika, Kraków.
- Soja, P. (2005) Jak wprowadzać zaawansowane technolosie informatyczne do przedsiębiorstwa. Katedra Informatyki Akademia Ekonomiczna w Krakowie.
- Portal Korporacyjny Lasów Państwowych <http://www.lasy.gov.pl/>
- Udacity. Inc. <https://www.udacity.com/>
- Coursera <https://www.coursera.org/>
- Canvas Network <https://canvas.net>
- Leśny Bank Genów Kostrzyca <http://www.lbg.igora.pl>
- TechSmith Corporation, <http://www.techsmith.com>