

# Web Mapping Using ArcGIS Server 9.2

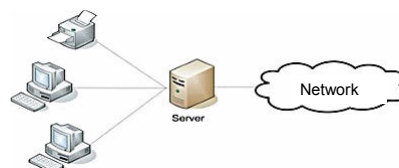
By Divyang M. Trivedi  
4th Sem. , M.Sc (FIT)  
Fh-Eberswalde.

## What is Web Mapping ?

- Generating and Delivering maps online (over network internet / intranet)
- Different devices can be used to view / access web mapping applications (Desktops, notebooks, Mobile phones, PDAs etc).

## What is a Server ?

- a server technology is a solution which serves data, printers, faxes, computers etc.
- together with clients; the server composes client / server network.



## Need for a special server ?

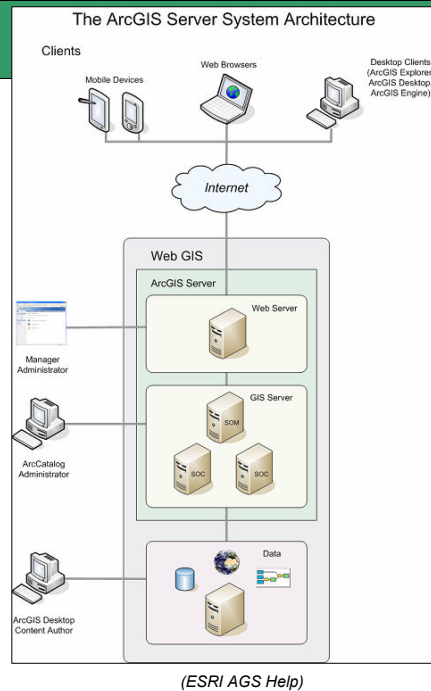
- Server allows to share resource (data, printers etc)
- GIS server shares maps (resource).
- GIS server provides functionality to users.
- Interaction with the maps (resources).

## Examples of Web Mapping . . .

- Google Earth (Application)
- Google Maps (through web browser)
- Map Server
- ArcIMS (Internet Map Server)
- ArcGIS Server (AGS)
- etc . . .

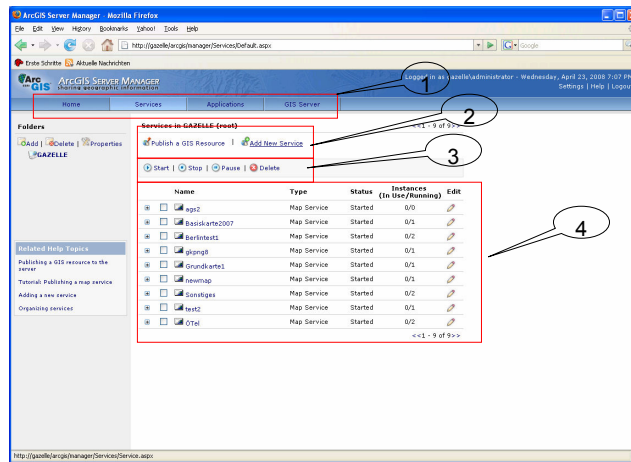
## Components of AGS ?

- SOM (Server Object Manager) and one or more SOCs (Server Object Containers).
- SOC can be thought as a container hosting the services.
- SOM manages these services.
- SOM is capable of initiating and terminating these services.
- Also connection with ArcSDE can be established.

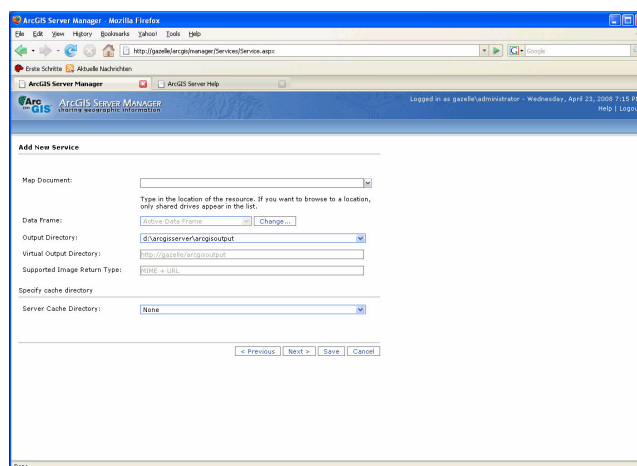




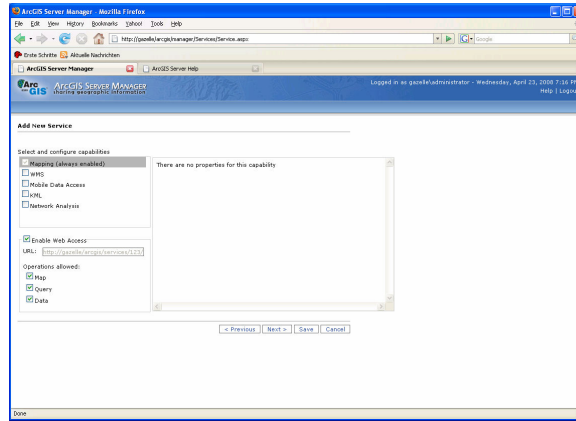
Continued . . .



Continued . . .



Continued . . .

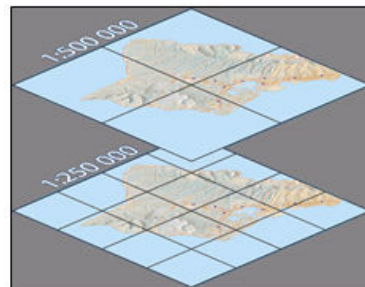


### Step 3. Generating cache.

- Cache is an image tile.
- Reduces the rendering time.
- There were total 11 scales used for application.
- Name of mxd file = Grundkarte07.mxd

#### Scales used

1:6,000,000	1:4,000,000
1:2,000,000	1:1,000,000
1:500,000	1:250,000
1:100,000	1:50,000
1:25,000	1:10,000
1:5,000	



(An Image showing how cache can be useful, ESRI ArcGIS Server Help)

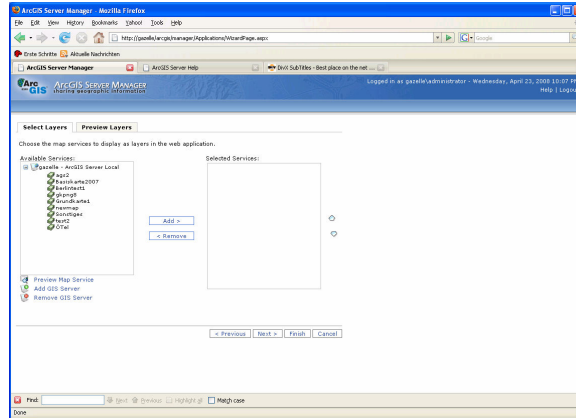
Scale 1:6000000



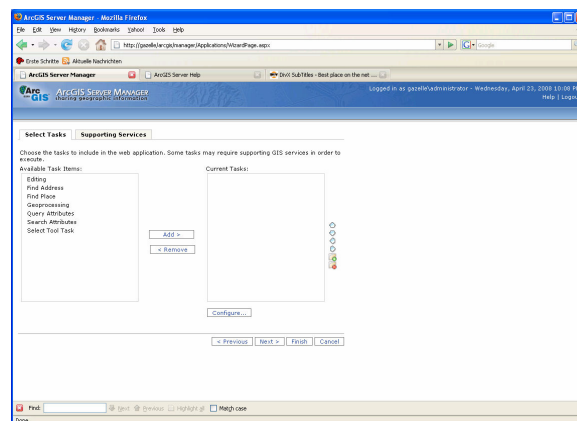
Scale 1:2000000



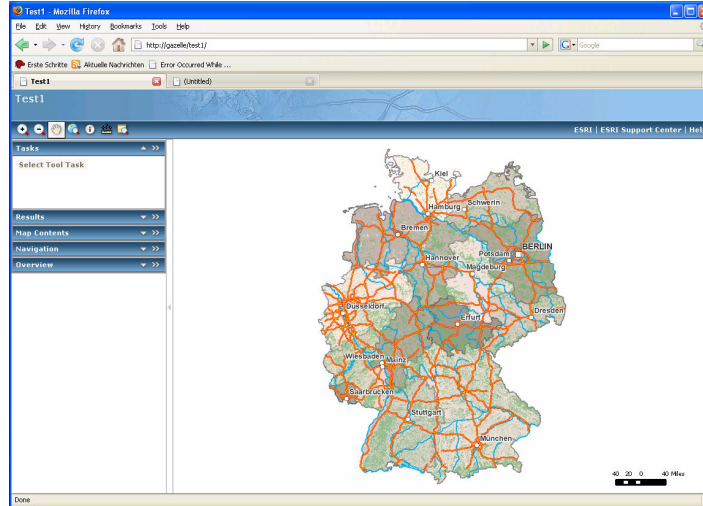
## Step 4. Creating web application.



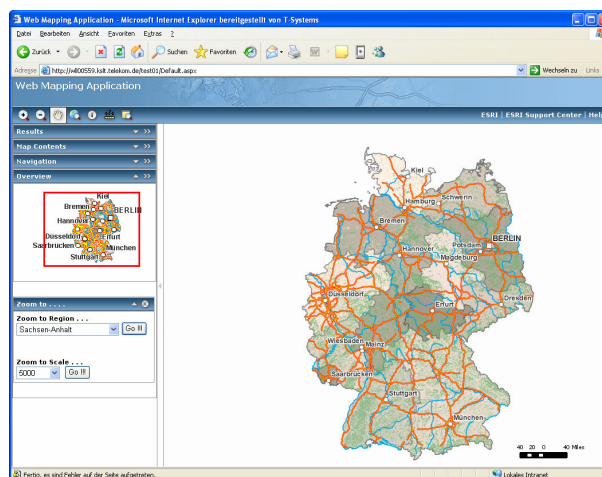
## Continued . . .



## Web application



## Further customisation of the web mapping application using .NET Web ADF





## References

- 1) ESRI Webpage  
<http://www.esri.com>
- 2) ESRI Developer Network  
<http://edn.esri.com/>
- 3) ArcGIS Server 9.2 help.

Thank you . . .

*Questions !!!*